

4

3

2

1

D

D

C

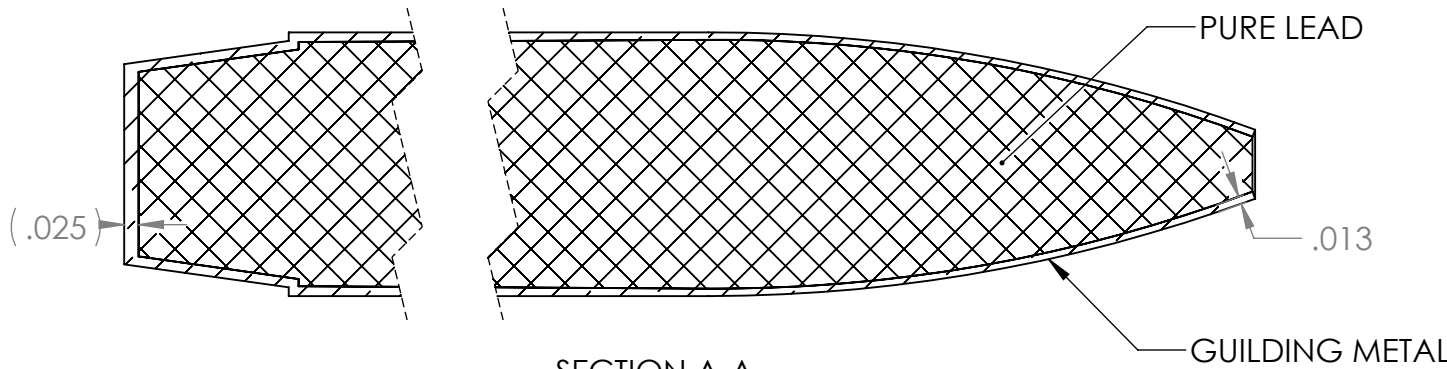
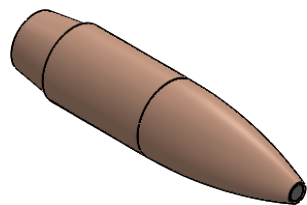
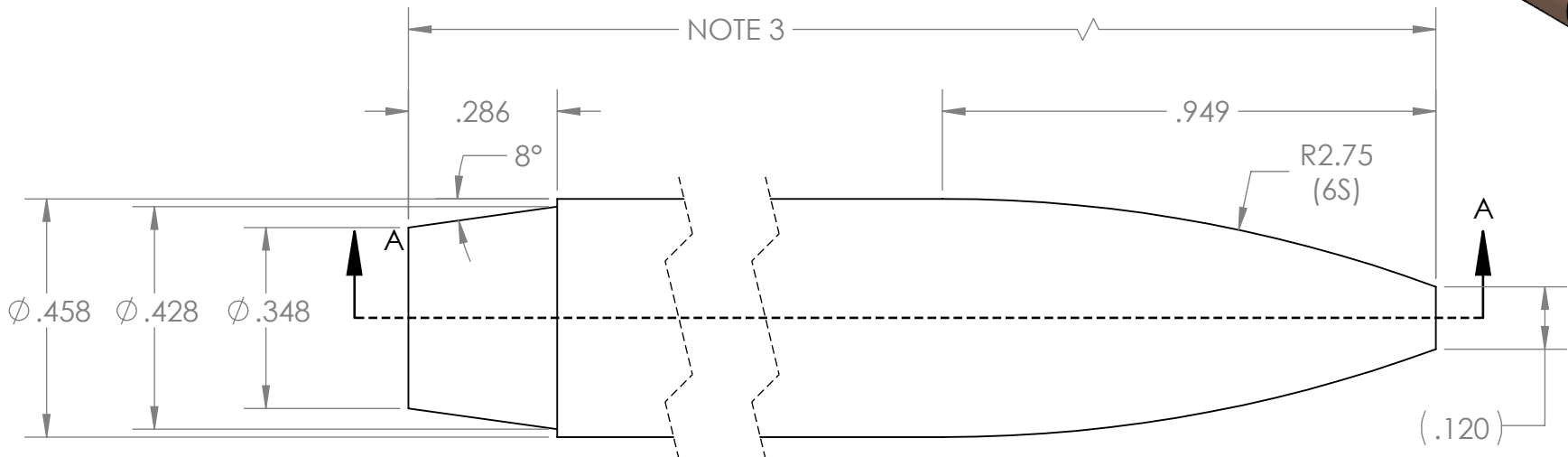
C

B

B

A

A



SECTION A-A

- NOTES:
- 1. JACKET MATERIAL: GUILDING METAL
  - 2. CORE MATERIAL: 99.9% PURE LEAD
  - 3. OVERALL LENGTH IS DEPENDENT ON DESIRED GRAIN WEIGHT. JACKET LENGTH AND LEAD CORE WEIGHT MUST BE DISCOVERED.

**UNLESS OTHERWISE SPECIFIED:**  
DIMENSIONS ARE IN INCHES TOLERANCES:  
FRACTIONAL  $\pm$  1/2 DEGREE  
ANGULAR: MACH  $\pm$  1 BEND  $\pm$  1  
TWO PLACE DECIMAL  $\pm$  .010  
THREE PLACE DECIMAL  $\pm$  .005  
FOUR PLACE DECIMAL  $\pm$  .0005  
SURFACE FINISH =  $\sqrt{32}$  OR BETTER

**PROPRIETARY AND CONFIDENTIAL**  
THE INFORMATION CONTAINED IN THIS DRAWING IS THE SOLE PROPERTY OF CORBIN MFG & SUPPLY, INC. ANY REPRODUCTION IN PART OR AS A WHOLE WITHOUT THE WRITTEN PERMISSION OF CORBIN MFG & SUPPLY, INC IS PROHIBITED.

	NAME	DATE
DRAWN		
CHECKED		
ENG APPR.		
MFG APPR.		
Q.A.		

COMMENTS:

**CORBIN MFG & SUPPLY, INC.**

TITLE:  
**CORBIN .458 CALIBER RB STANDARD**

SIZE <b>A</b>	DWG. NO. RBTO-4-S-458-6S	REV 0
------------------	-----------------------------	----------

SCALE: 3:1	WEIGHT:	SHEET 1 OF 1
------------	---------	--------------